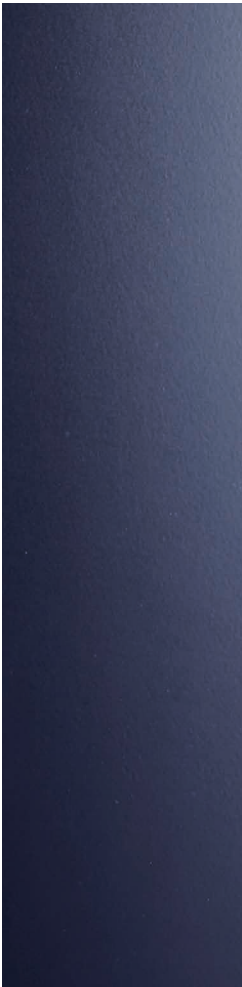




AB 1 & AB 2

AB SERIES







MODELS

AB1

single hinged leaf

AB2

double hinged leaf



MODELS

AB1

AB2

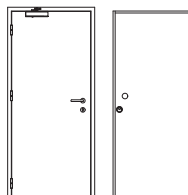
description

Bullet-proof hinged metal door with the frame made of bended electro-zinc coated steel profiles (2 mm thickness) welded to each other. When the door is closed, the hinges side of the leaf will fully nest (from top to bottom) into the frame.

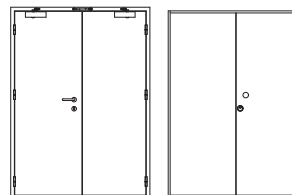
The leaf is made of two electro-zinc coated steel panels (1.5 mm thickness) and contains thermal insulating and bulletproof materials. An automatic seal may be incorporated on leaf's bottom, if necessary.

The pivoting behavior of the door is ensured by three hinges of this series.

specification



AB 1 | single hinged leaf



AB 2 | double hinged leaf

model | typology

classification achieved when tested

ballistic resistance (EN 1523)
classification according to standard EN 1522

FB4 NS

FB4 NS

burglar resistance (EN 1628 | EN 1630)
classification according to standard EN 1627

RC 4

-

dimensions (mm)

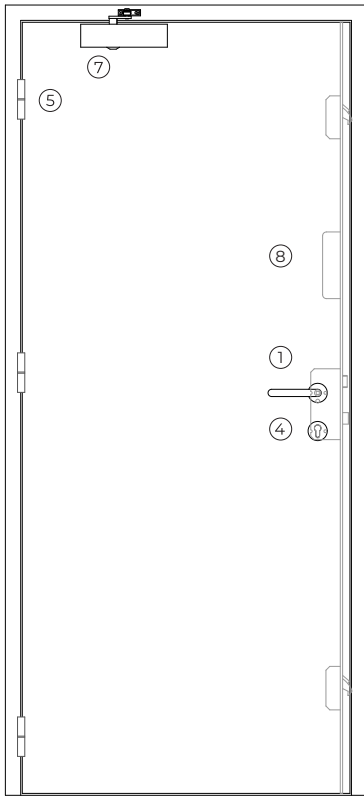
W x H (standard) ⁽³⁾	800 / 900 x 2025 / 2100	1400 x 2025 / 2100
W maximum	1080	1400
H maximum	2520	2100
external frame (standard)	W + 143 x H + 62	W + 124 x H + 62
other dimensions	upon request	upon request

⁽³⁾ W x H = width x height = free passage

construction

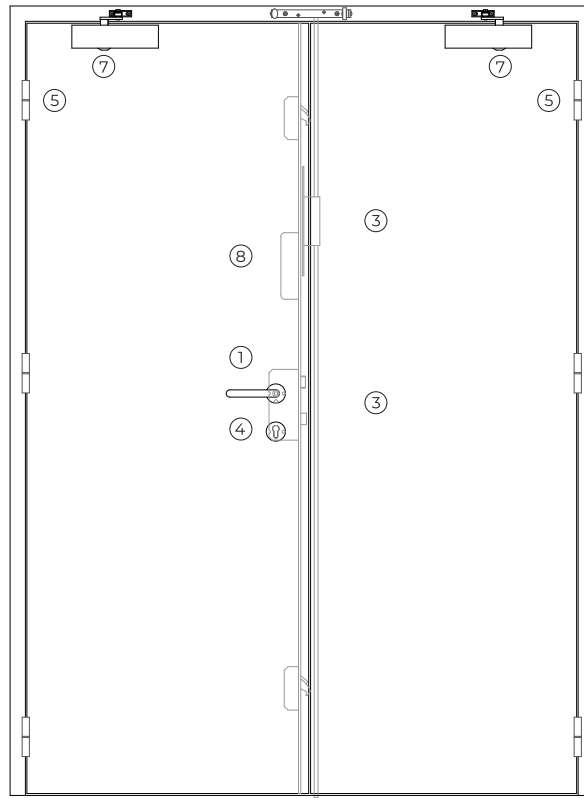
leaf thickness (mm)	69	69
leaf weight (kg / m ²)	70	70
hinges (per leaf)	3	3
standard vision panel (mm)	300 x 400 / 500 x 500	300 x 400 / 500 x 500
finishing (standard)	mdf to paint/ lacquering in standard RAL color ⁽⁴⁾	mdf to paint/ lacquering in standard RAL color ⁽⁴⁾
finishing (optional)	lacquering to other RAL color / wood venner	lacquering to other RAL color / wood venner

⁽⁴⁾ RAL colors standard = 7035, 7038, 9005 e 9010



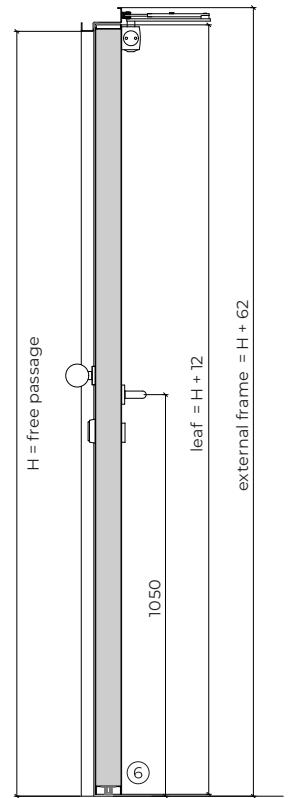
interior view

AB 1

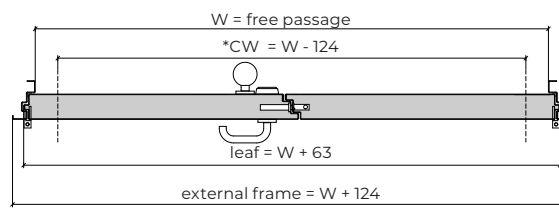
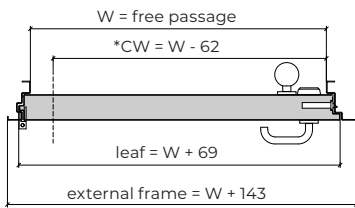


interior view

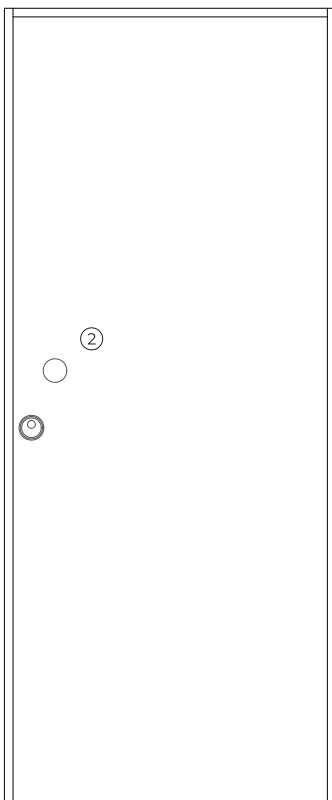
AB 2



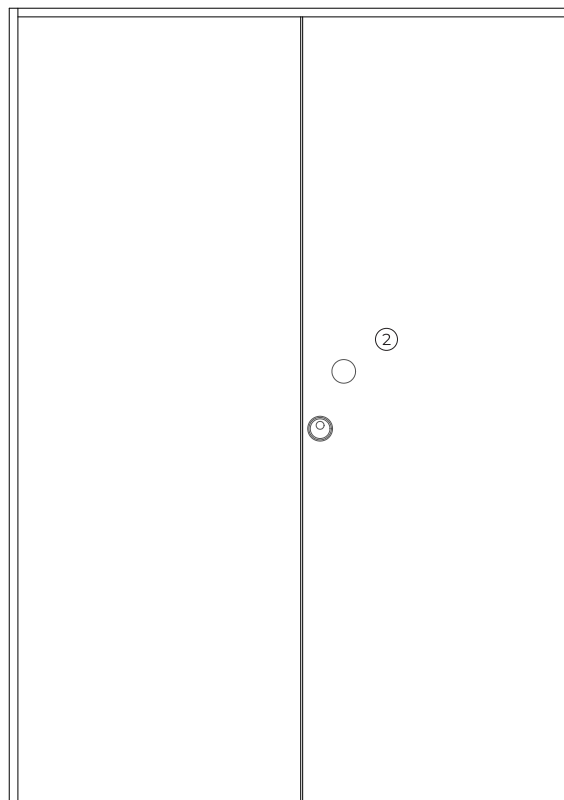
vertical section



*Clear Width, measured with the door leaf in a 90-degree open position excluding the handles.

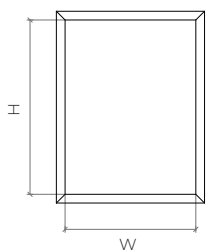


exterior view

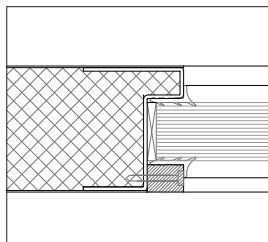


exterior view

optionals



vision panel
HxW (400x300 / 500x500)



accessories and hardware

AB 1

AB 2

handle / anti-panic bar

- 1 standard lever handle.
- 2 standard fixed door knob + security escutcheon

fixed door knob

lock

- 3 standard high security lock with 3 locking points and automatic locking system.

high security lock with 3 locking points and automatic locking system + 2-point locking flush bolt with manual lever.

cylinder

- 4 standard high-security cylinder (european profile).

hinges

- 5 standard 3 hinges exclusive of this series.

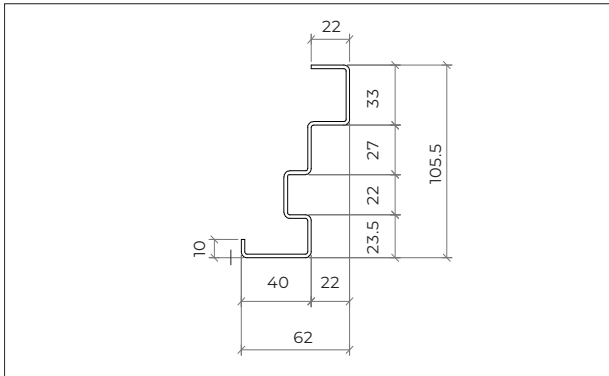
3 hinges exclusive of this series (per leaf).

others

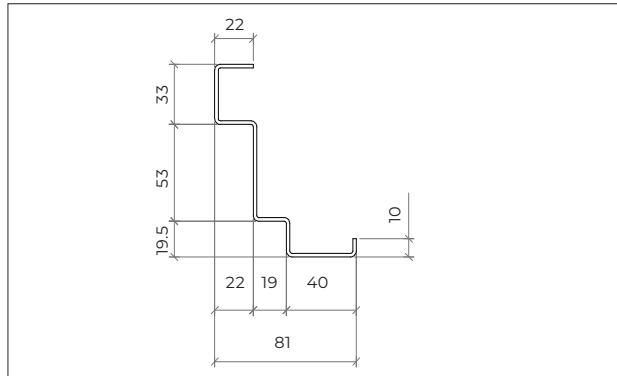
- 6 optional automatic seal.
- 7 optional overhead door closer with articulated arm guide rail.
- 8 optional lock motorization.

overhead door closer with link arm or guide rail + closing sequence selector.

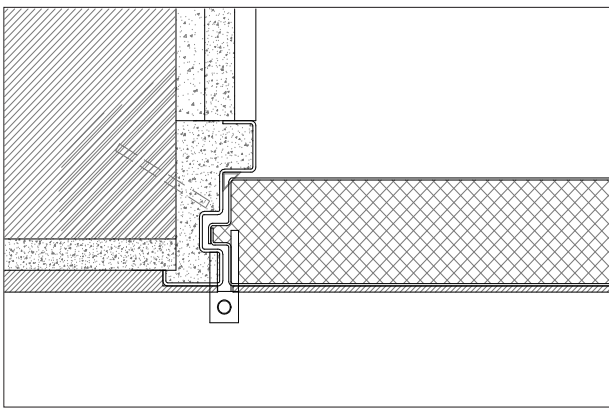
detailed drawings



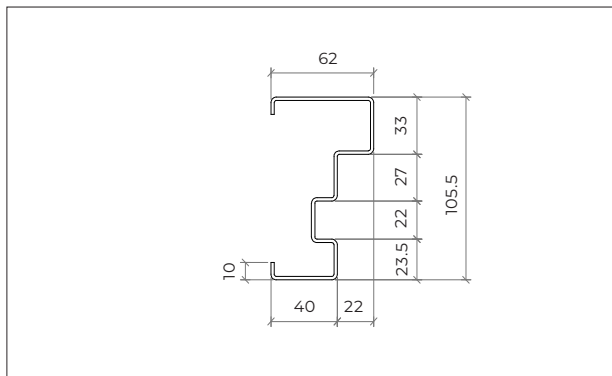
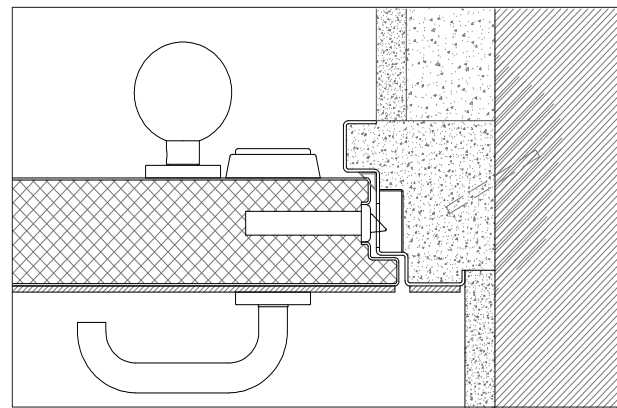
standard frame (hinges side)



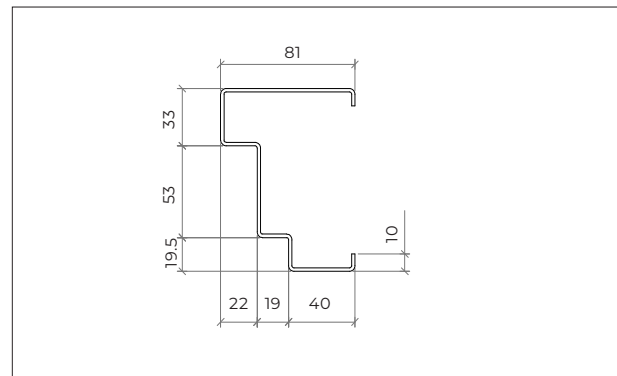
standard frame (lock side)



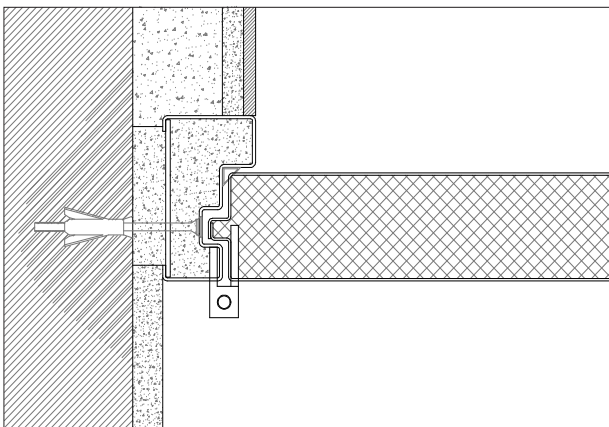
standard frame | masonry wall mounting | steel rod fixation | plaster finish



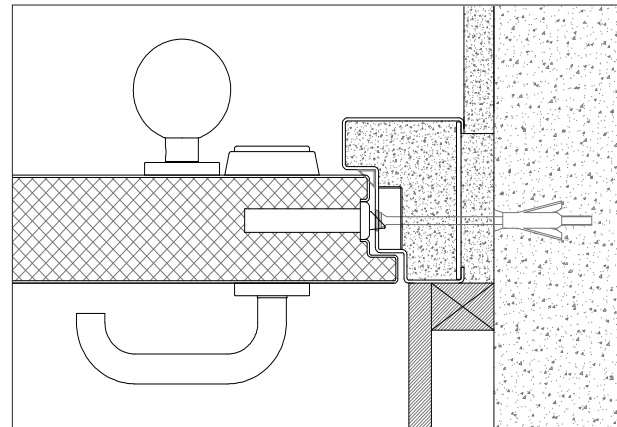
modified frame (hinges side)

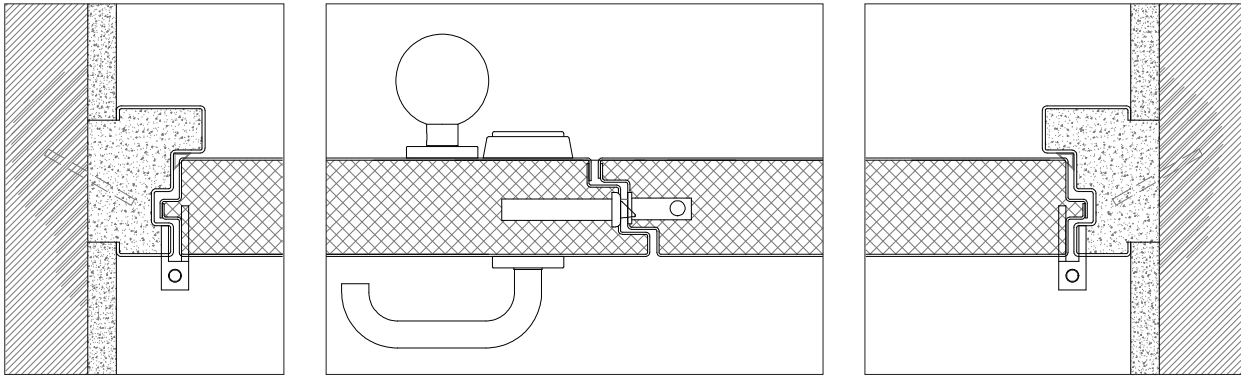


modified frame (lock side)

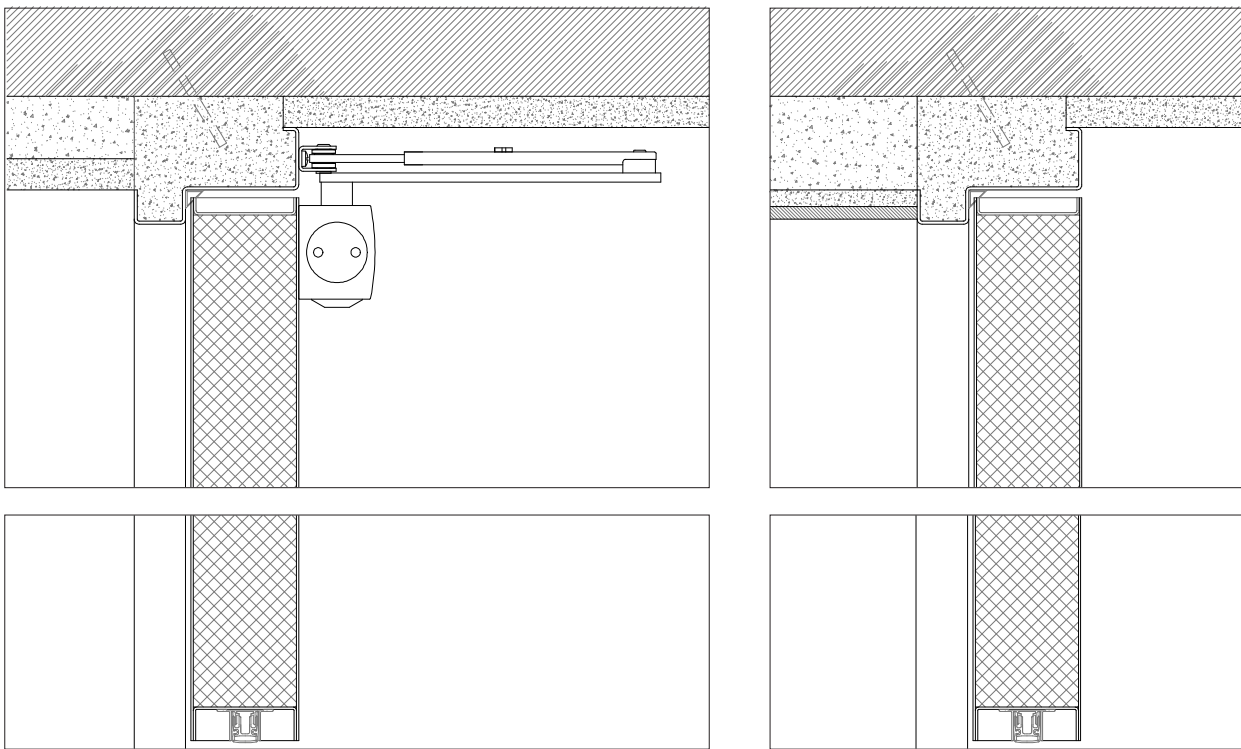


modified frame | masonry or concrete wall mounting | metal wall plugs fixation | plaster and metal finishes





modified frame | masonry wall mounting | steel rod fixation | plaster finish



standard frame | masonry wall mounting | steel rod fixation | plaster finish | door closer with an articulated arm

standard frame | masonry wall mounting | steel rod fixation | plaster finish

GROUP COMPANY



TRIA SA.

Parque Ind. Manuel Lourenço Ferreira - Lt.43
3450 - 232 Mortágua, Portugal
//+351 231 927 480 //geral@tria.pt
www.tria.pt

VERS.10.24