



S1A.60 & S2A.60

S SERIES







MODELS

S1A.60
single hinged leaf

S2A.60
double hinged leaf



MODELS

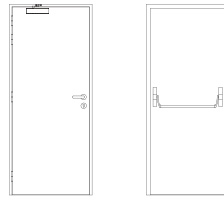
S1A.60

S2A.60

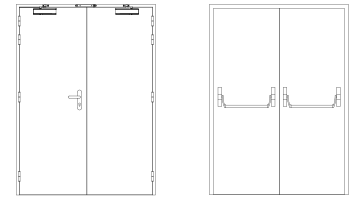
description

Hinged wooden door with frame made of solid wood pieces. It contains acoustic and intumescent seals that ensure the necessary tightness against flames and hot gases, as well as a high acoustic attenuation. The leaf is made of a solid wood edge and contains thermal insulating and acoustic materials according to the TRIA constructive system. An automatic seal and/or a intumescent grid, may be incorporated on the leaf, if necessary. The pivoting behavior of the door is ensured by three hidden hinges TECTUS – SIMONSWERK.

specification



S1A.60 | single hinged leaf



S2A.60 | double hinged leaf

model | typology

classification achieved when tested

FR integrity (EN 1634-1) ⁽¹⁾	E 30 / E 45 / E 60	E 30 / E 45 / E 60
FR integrity and insulation (EN 1634-1) ⁽¹⁾	EI ₁ 30 / EI ₂ 30 / EI ₂ 45 / EI ₂ 60	EI ₁ 30 / EI ₂ 30 / EI ₂ 45 / EI ₂ 60
acoustic (EN 20140-3)	35 dB	35 dB

⁽¹⁾ classification according to standard 13501-2

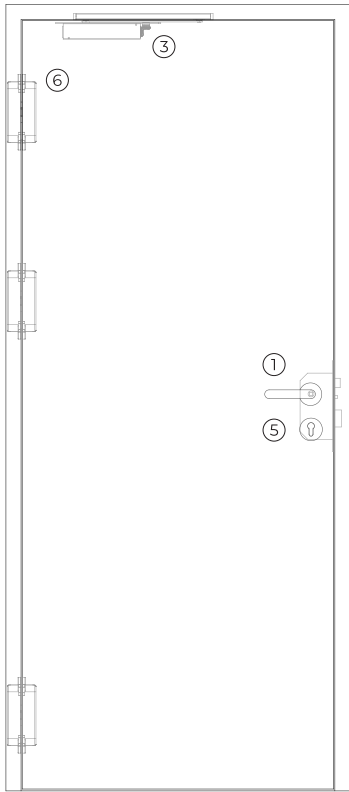
dimensions (mm)

W x H (standard) ⁽²⁾	800 / 900 x 2000 / 2100	1400 / 1600 / 1800 x 2000 / 2100
W maximum	950 (EI 60) / 1090 (EI 45)	1900 (EI 60) / 2185 (EI 45)
H maximum	2450 (EI 60) / 2815 (EI 45)	2450 (EI 60) / 2815 (EI 45)
external frame (standard)	W + 110 x H + 55	W + 110 x H + 55
other dimensions	upon request	upon request

⁽²⁾ W x H = width x height = free passage

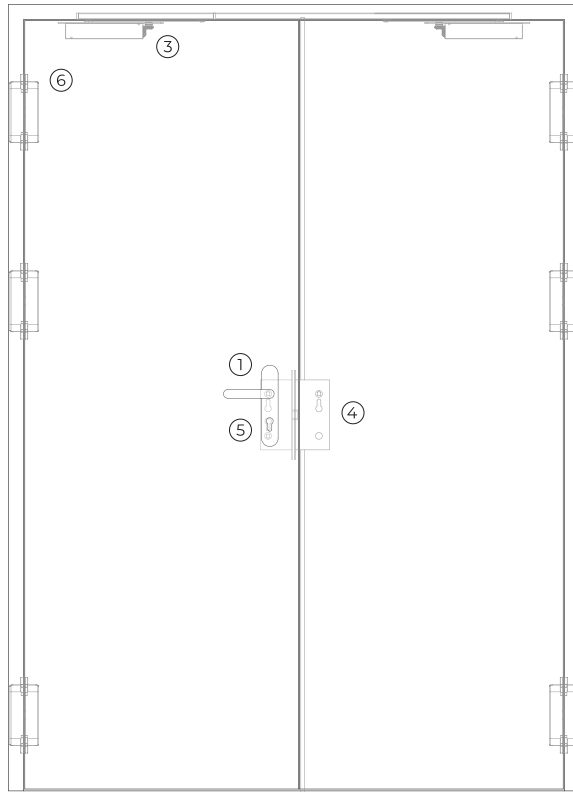
construction

leaf thickness (mm)	58	58
leaf weight (kg/m ²)	37	37
hinges (per leaf)	3	3
standard vision panel (mm)	Ø 300 / 300 x 400	Ø 300 / 300 x 400
finishing (standard)	mdf to paint	mdf to paint
finishing (optional)	veneering in various woods / materials	veneering in various woods / materials



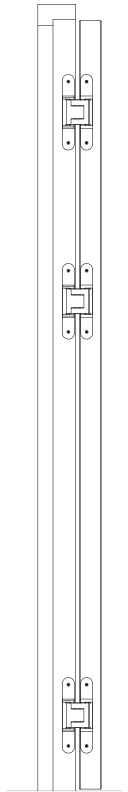
STA.60

exterior view

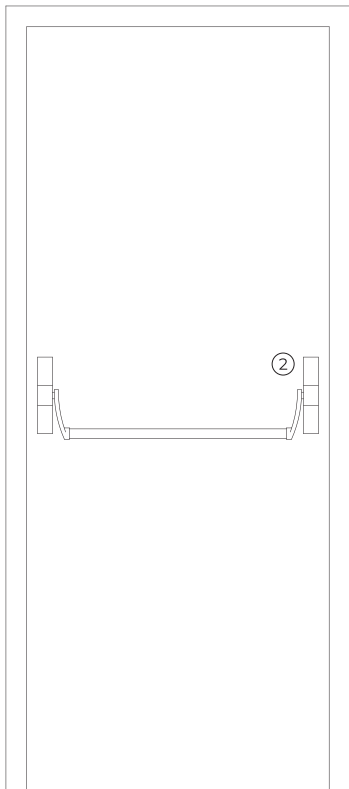
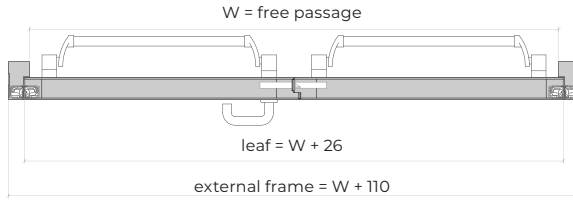
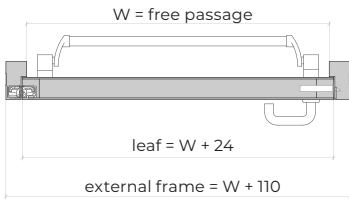


S2A.60

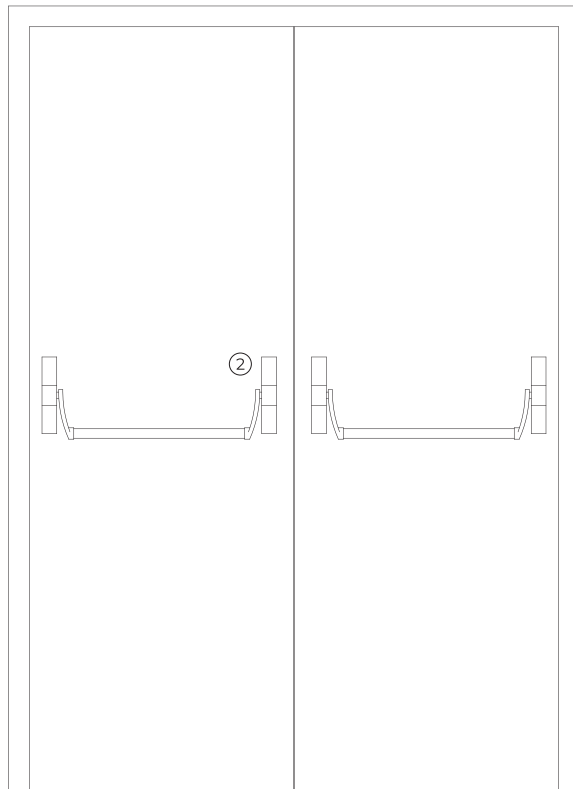
exterior view



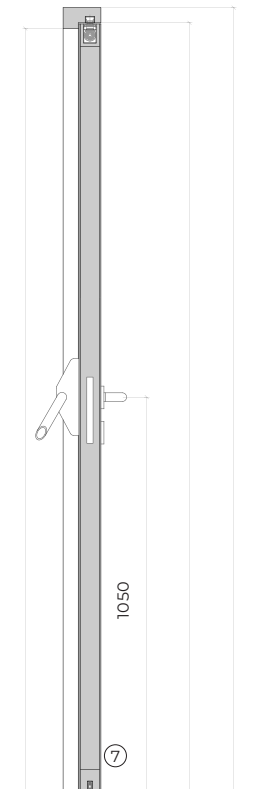
top view hinges



interior view



interior view

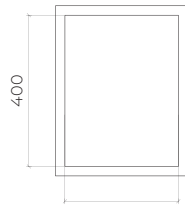


vertical section

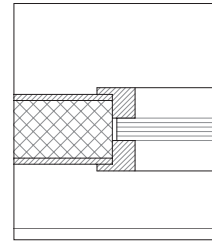
optionals



circular vision panel



circular vision panel



overlap glazing bead

accessories and hardware

S1A.60

S2A.60

handle / anti-panic bar ⁽³⁾

- | | | | |
|---|----------|---|--|
| 1 | standard | anti-panic lever handle with drill finished in black (standard) or stainless steel. | |
| 2 | standard | anti-panic bar with gear unit, tube, cover caps and arms finished in nylon black (standard) or stainless steel. | |

⁽³⁾ alternatively, the door may be equipped with a pair of handles.

hydraulic door closer ⁽⁴⁾

- | | | | |
|---|----------|-----------------------------------|---|
| 3 | standard | hidden door closer. | hidden door closer + closing sequence selector. |
| | optional | door closer with sliding rail. | door closer with sliding rail + closing sequence selector. |
| | optional | door closer with articulated arm. | door closer with articulated arm + closing sequence selector. |

⁽⁴⁾ with electromagnetic hold-open (optional).

lock / counter lock

- | | | | |
|---|----------|---------------------------------------|--|
| 4 | standard | anti-panic lock with 1 locking point. | anti-panic lock with 1 locking point + counter lock. |
|---|----------|---------------------------------------|--|

cylinder

- | | | | |
|---|----------|----------------------------------|--|
| 5 | standard | 1/2 cylinder (european profile). | |
|---|----------|----------------------------------|--|

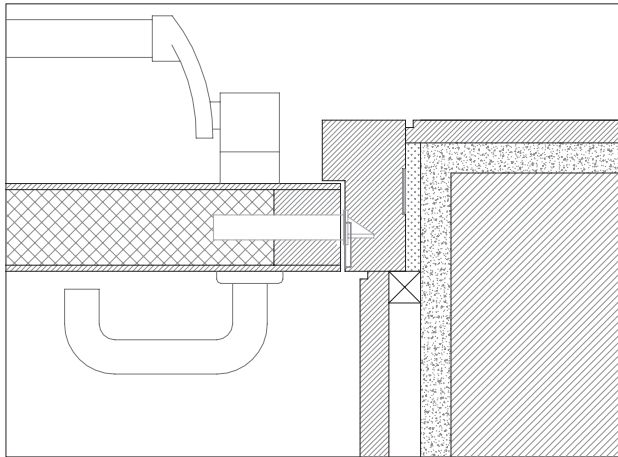
hinges

- | | | | |
|---|----------|----------------------------------|--|
| 6 | standard | 3 hidden hinges of this series. | 3 hidden hinges of this series (per leaf). |
| | optional | 4 visible hinges of this series. | 4 hidden hinges of this series (per leaf). |

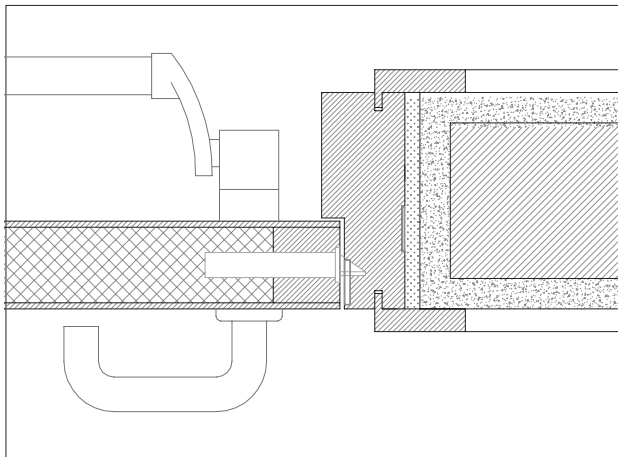
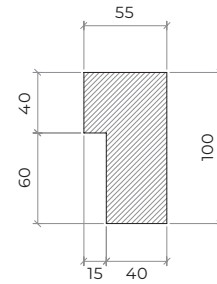
others

- | | | | |
|---|-----------|--|--|
| 7 | optionals | automatic seal.
rectangular and circular vision panels. | |
|---|-----------|--|--|

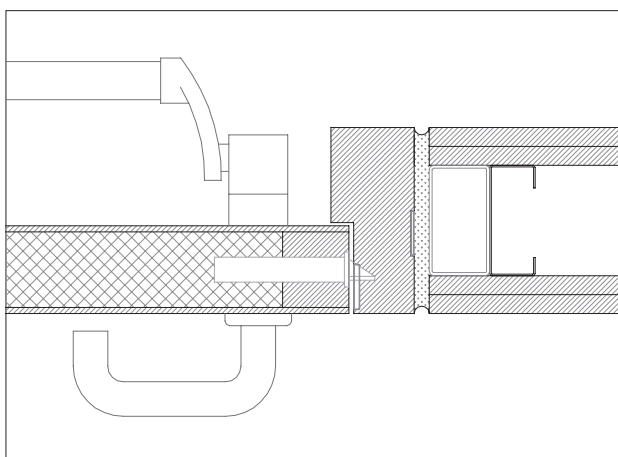
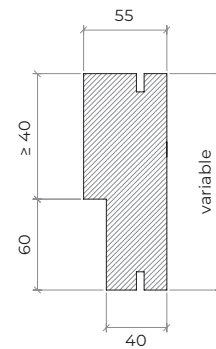
details



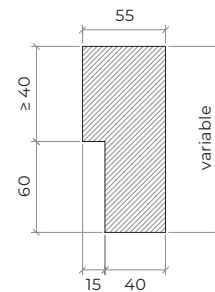
standard frame | masonry wall mounting | fixation with expandable foam | plaster and wood finishes

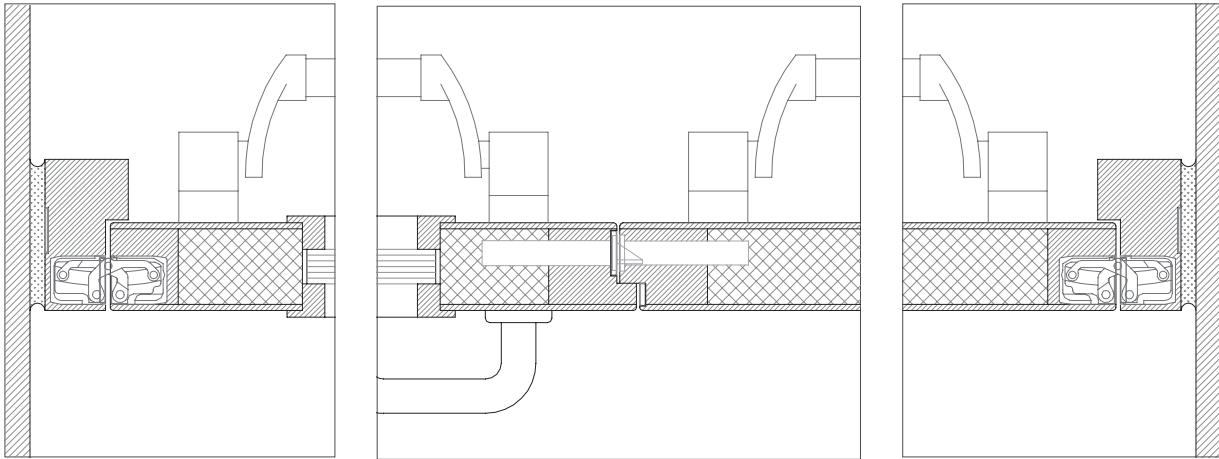


modified frame | concrete wall mounting | fixation with expandable foam | plaster and wood finishes

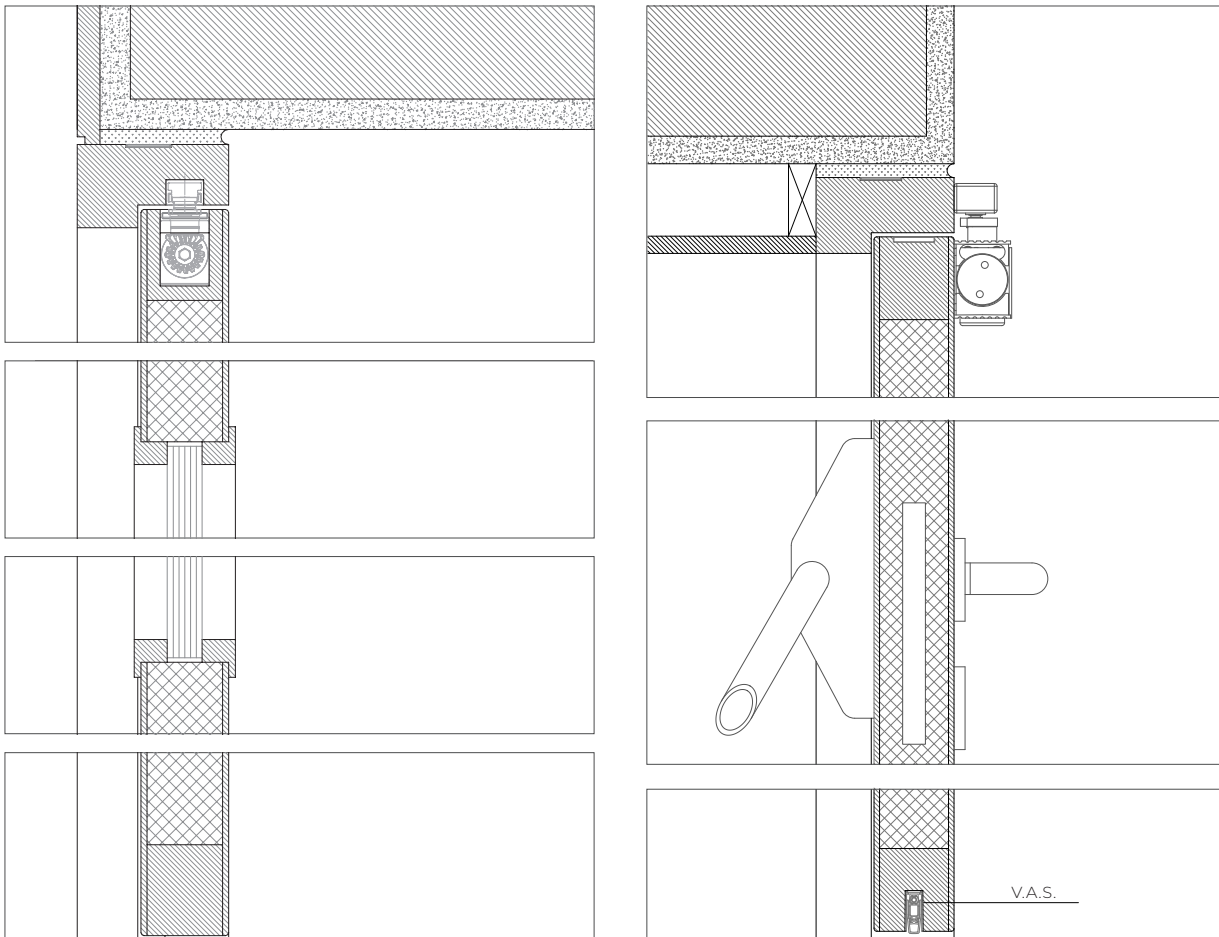


modified frame | gypsum wall mounting | metal portico fixation with expandable foam





standard frame | concrete wall mounting | fixation with expandable foam



standard frame | masonry wall mounting | fixation with expandable foam | plaster and wood finishes | hidden door closer

standard frame | masonry wall mounting | fixation with expandable foam | plaster and wood finishes | door closer with sliding rail

GROUP COMPANY



TRIA SA.

Parque Ind. Manuel Lourenço Ferreira - Lt.43
3450 - 232 Mortágua, Portugal
//+351 231 927 480 //geral@tria.pt

www.tria.pt

VERS.**03.25**